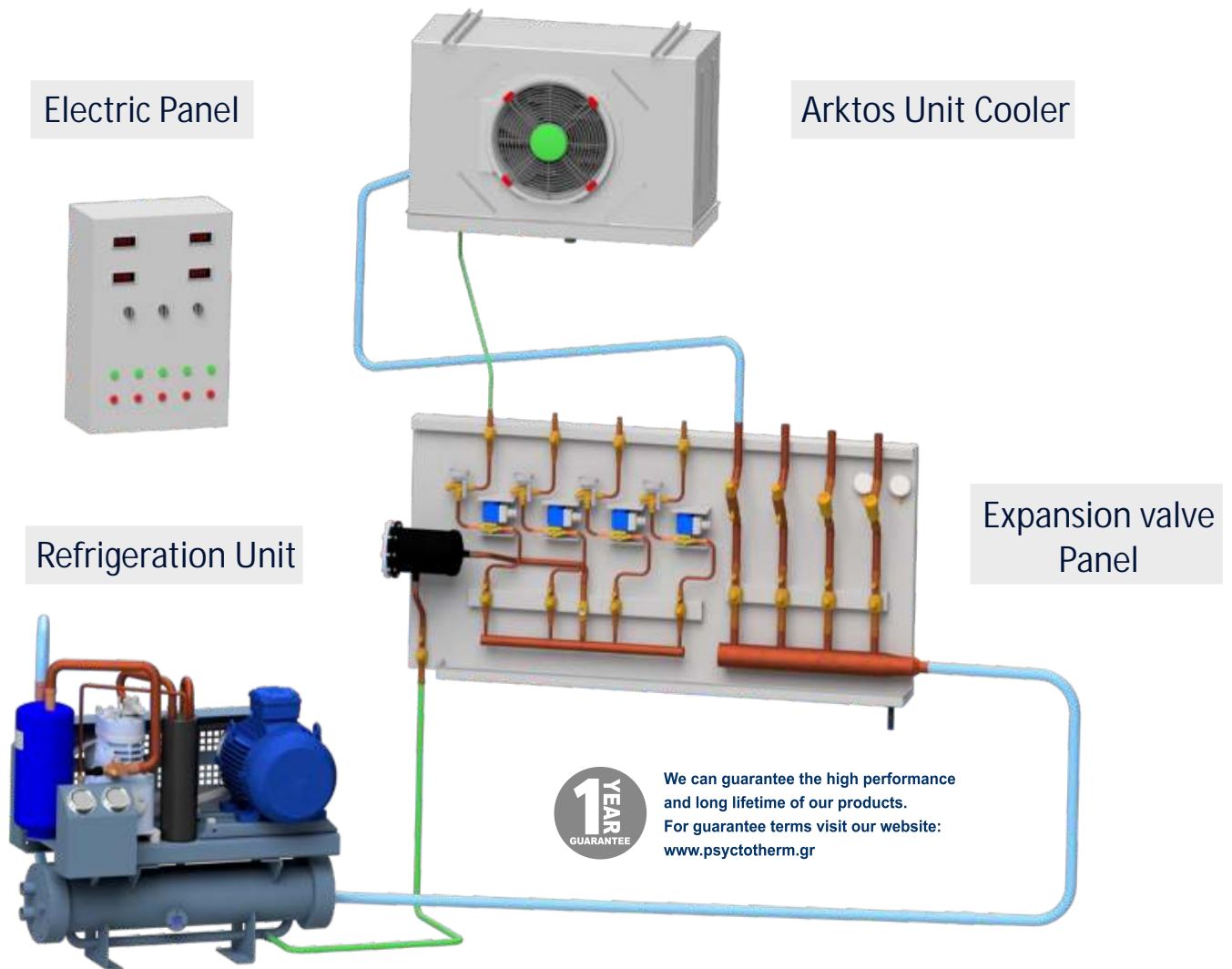


## Provision Plant Machinery Equipment



### Complete machinery equipment for the Provision Plants:

- Refrigeration unit with marine open type compressor and sea water cooled condenser.
- Expansion valve panel with option for 3 or 4 rooms (low temperature meat and fish room, medium temperature vegetable and dairy room).
- Unit coolers for marine use for low and medium temperature applications with electric defrost.
- Electric panel for the control of the complete plant.

## Refrigeration Unit



Marine refrigeration unit includes:

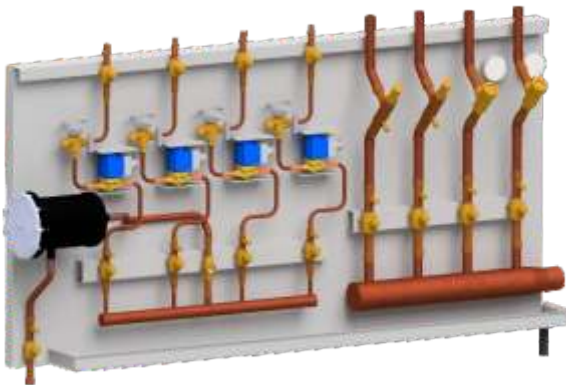
- Dorin marine type belt driven open type compressor.
- Electric motor with higher efficiency for reduced power consumption.
- Suction accumulator & oil separator.
- Sea water cooled condenser (optionally fresh water cooled).
- Panel with low/high pressure switch and gauges.

Model	RF.3LVS.SW	RF.41VSM.SW	RF.51VSM.SW
Cooling capacity at 1000RPM (kW)*	8.96	13.89	23.57
Motor Power (kW)	5.50	7.50	15.00
Power supply	380/440V, 50/60Hz		
Refrigerants	R404a, R407f, R449a		
Connections (inch)	Suction	1.1/8"	1.3/8"
	Liquid	1/2"	5/8"

\*Nominal cooling capacity at 1000rpm, -15°C evaporating temperature, 45°C condensing temperature, R404a.

Compressor RPM range: 600RPM to 1300RPM

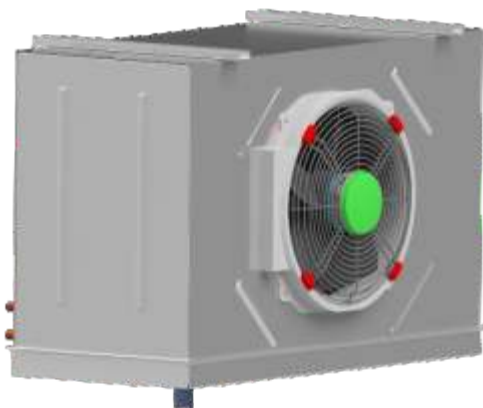
## Expansion Valve Panel



Expansion valve panel with 3 or 4 rooms connections. includes:

- Liquid line filter drier housing with exchangeable solid core.
- Thermostatic expansion valves.
- Solenoid valves.
- Pressure regulation valves for the medium temperature lines, including gauges for monitoring.
- Check valves for the low temperature lines.
- Ball valves for independent isolation of each line.
- Tray with drainage connection for the condensates.

## Arktos Unit Cooler



Low Temperature Unit Coolers for Meat/Fish room:

Model	CL.015	CL.030	CL.040
Cooling capacity (kW) at =-8°C	2.01	3.36	4.52
Air Flow (m <sup>3</sup> /h)	1553	2440	4574

Medium Temperature Unit Coolers for Vegetable/Dairy room:

Model	CH.010	CH.020	CH.030
Cooling capacity (kW) at =10°C	2.87	4.41	6.26
Air Flow (m <sup>3</sup> /h)	1558	1393	2337

Additional models and various power supplies available.